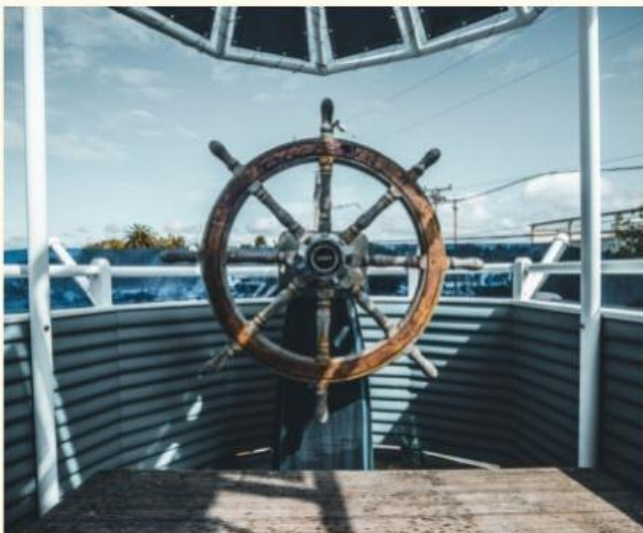


# SouthPoint Life NEWSLETTER



Hebrews 13:7

**REMEMBER YOUR  
LEADERS, WHO SPOKE  
THE WORD OF GOD TO  
YOU. CONSIDER THE  
OUTCOME OF THEIR WAY  
OF LIFE AND IMITATE  
THEIR FAITH.**



SouthPoint Church of Christ, 24 Towers Terrace, Edwardstown SA 5039  
August/ September 2021

## ABOUT US

---

SouthPoint Edwardstown is a community church, a place where everyone is welcome.

Our service is on Sundays at 10am, followed by informal morning tea, where we get a chance to chat with visitors, new members, and friends.

## “CREATE”, ART CLASSES.



Every Sunday during school term we offer “Create”, art classes. Headed by Paul & Gaynor, if art is your therapy, please come along to bring your projects to life. Paul & Gaynor welcome beginners, intermediate or advanced artists, or artists at heart. All welcome.



# KIDS CHURCH

Our Kids Church caters for children of all ages from babies to Young Adults. Children and their families are supported by a team of volunteers. Kids church runs during service in school terms. Various activities are planned during the year. (Covid safe)  
Additionally to that Youth group meets every Friday evening too.

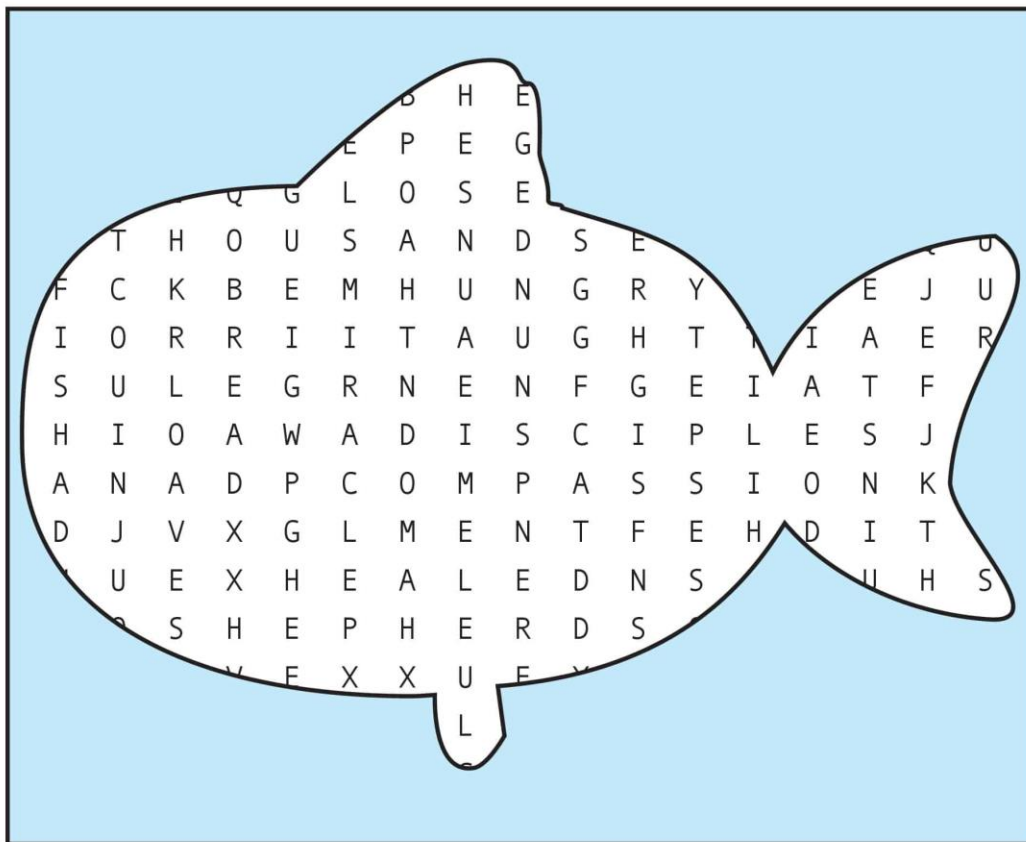
The groups:

- Creche
- Bubbles (3-5 yrs)
- Splash (5-9 yrs)
- Xtreme (9-12 yrs)
- Youth (12-18 yrs)
- Young Adults (18+ yrs)



## Jesus Fed the People Word Search

Find the words on the list that are hidden in the puzzle.  
The words can be right to left, up and down, or diagonally.



BREAD  
COMPASSION  
DISCIPLES  
EAT

FISH  
HEALED  
HUNGRY  
LOAVES

MIRACLE  
SHEPHERD  
TAUGHT  
THOUSANDS

## Online Presence

Our SouthPoint Website and App is our face to the outside world. If you missed a sermon, you could look at the sermon video on the website or App, and you can also view the latest Newsletter (with some photos excluded for security reasons).

Other things you will find on the website are events, daily verses, connect groups, prayer requests, feedback, payments etc.

Our website address is: <https://southpointcc.org.au/>

Steps to download the new Church Central App:

- Download the Church central app from App Store (Apple) or Play Store (Android)
- Select "Find a Church". Search for SouthPoint and select as favourite
- Delete your Old SouthPoint App

## **SOUTHPOINT ORGANIZATION IS RUN BY EIGHT MINISTRIES.**

1. Pastoral Care
2. Hospitality
3. Outreach and Engagement
4. Leaders support and Development
5. Generations and Discipleship
6. Preaching and Communication
7. Worship and Music
8. Stewardship

## MINISTRY AREA UNDER SPOTLIGHT

---

### STEWARDSHIP

The Stewardship Ministry team is responsible for overseeing the governance, financial and property aspects of the Church.



The team is led by Rod Hook and comprises of Josephine Childers (finance), Ben Wade (Maintenance) and Matt Thomas (Development). Valued support is provided from our two ladies in the Church office, namely Hanli Bothma and Ivana Fiveash.

Stewardship team's duties include as they ensure our:

- offerings are accounted for and banked
- church expenses are paid when due
- transparency and appropriate auditing of all church finances
- ensuring maintenance issues with our property are addressed
- developing the thoughts and ideas of church members regarding our future development prospects
- all obligations of the church as a registered not-for-profit and an incorporated body are attended to in accordance with legislation and government requirements.

## Reflections

# SALA

In Paul's words:

*This year's SALA event at SouthPoint was a great success on many fronts. Firstly, it brought people into the church building who wouldn't normally enter. This allows the church to be seen as part of the community, a blessing in the community and **Create** and other programs in the church available to the community. It also brings together people from many churches including those who used to attend here, both to look and participate. Secondly, it allows Create artists a chance to show and maybe sell their work which is great for their development and confidence. Also, it has the effect of more closely bonding the group together. Thirdly it is yet another example of how as a body our church works together to achieve its aim to bless, be a place where the community can belong, believe and become what God wants for each individual. For all your contribution whatever you did to help I thank you.*  
*Paul*

SouthPoint would like to thank Paul & Gaynor for organizing this event. We also thank each and every artist for sharing their talents and art with us.

Reminder – SALA is still running until the end of August and the art is available for public viewing on Sundays from 1pm – 3pm.



## OUR OFFERINGS AND CHURCH FINANCES

---



**Thank you** to all our members for your continued generosity in giving to our Church during the uncertainties and the difficulties we have all experienced over the past year.

With our Annual Meeting approaching we take this opportunity to provide preliminary advice of our financial position for the year ending 30 June 2021. Our aim is to always be transparent about management of our finances.

We can report that for the 2020/2021 financial year we achieved a surplus of \$6,812.

Our income for the year was the order of \$169,000, comprising mainly offerings, but also including interest and rent.

Our expenses comprising mainly salaries, property maintenance, rates, insurances, and utilities came to a little over \$162,000.

Our average offerings for the year were \$14,100, which is less than we will need it to be, especially is we are to return to engaging the services of a full-time pastor.

We are happy to have further discussion on this at our Annual Meeting.



# SOUTHPOINT SURVEY RESULTS



## Southpoint Annual Ministry Survey May 2021

We had 48 people access the survey and about 33 full response sets.

All questions were on a scale of 1-5 (from strongly disagree to strongly agree). On average all areas are above the mid-point of the scale (2.5). Many areas have averages in the 4-5 range. This represents a good score, where many people are agreeing or strongly agreeing.



Average scores 3-4 represent more mixed, ambiguous, or neutral experiences and are worth interrogating further, and possible foci for improvement. There were no average scores below 3 except where there are **NEGATIVELY** worded questions (where a higher score means doing less well – so watch for the wording of the question to make sense of scores).



### **WELCOME AND HOSPITALITY Statistics**

Welcome and hospitality is how we help each who attends our church feel like part of the family.

When I think about my experience of Welcome and Hospitality at Southpoint over the past few months ...

I feel welcomed at Southpoint

| Average | Most Occurring | Minimum | Maximum |
|---------|----------------|---------|---------|
| 4.48    | 4              | 4       | 5       |

I have attended some community events held at Southpoint outside of church services

| Average | Most Occurring | Minimum | Maximum |
|---------|----------------|---------|---------|
| 3.73    | 4              | 1       | 5       |

I have people that I think of as friends at Southpoint

| Average | Most Occurring | Minimum | Maximum |
|---------|----------------|---------|---------|
| 4.5     | 5              | 3       | 5       |

I feel like I am getting to know more people at Southpoint

| Average | Most Occurring | Minimum | Maximum |
|---------|----------------|---------|---------|
| 4.03    | 4              | 3       | 5       |

I feel like there is a welcoming atmosphere at Southpoint

| Average | Most Occurring | Minimum | Maximum |
|---------|----------------|---------|---------|
| 4.27    | 4              | 2       | 5       |

Southpoint is an inclusive Church

| Average | Most Occurring | Minimum | Maximum |
|---------|----------------|---------|---------|
| 4.16    | 4              | 3       | 5       |

If I wanted to get more involved in our Leadership Development and Support team, I would know who to speak to

| Average | Most Occurring | Minimum | Maximum |
|---------|----------------|---------|---------|
| 4.03    | 4              | 2       | 5       |

### *Praise Point*

*Nicole is extremely dedicated, full of exciting new ideas, methods of achieving success + encouraging others to get involved in a variety of projects.*

### **GENERATIONS AND DISCIPLESHIP Statistics**

Our Generations and Discipleship ministries are the way that we help people to grow in their faith. When I think about my experience of Generations and Discipleship at Southpoint over the past few months ...

I am aware of groups I can join to grow in my faith

| Average | Most Occurring | Minimum | Maximum |
|---------|----------------|---------|---------|
| 3.38    | 4              | 1       | 5       |

Southpoint is encouraging me to grow in my faith

| Average | Most Occurring | Minimum | Maximum |
|---------|----------------|---------|---------|
| 3.90    | 4              | 2       | 5       |

I am part of a connect group

| Average | Most Occurring | Minimum | Maximum |
|---------|----------------|---------|---------|
| 3.03    | 2              | 1       | 5       |

I am part of a group of people that helps me to grow in my faith

| Average | Most Occurring | Minimum | Maximum |
|---------|----------------|---------|---------|
| 3.70    | 4              | 2       | 5       |

I would like to be part of a connect group

| Average | Most Occurring | Minimum | Maximum |
|---------|----------------|---------|---------|
| 3.69    | 3              | 2       | 5       |

Our Children's ministry is effective

| Average | Most Occurring | Minimum | Maximum |
|---------|----------------|---------|---------|
| 3.07    | 3              | 1       | 5       |

Our Youth Ministry is effective

| Average | Most Occurring | Minimum | Maximum |
|---------|----------------|---------|---------|
| 3.21    | 3              | 1       | 5       |

If I wanted to get more involved in our Generations and Discipleship I would know who to speak to

| Average | Most Occurring | Minimum | Maximum |
|---------|----------------|---------|---------|
| 4.38    | 5              | 2       | 5       |

*Point to ponder*

*I think that people in our church family would not overall know how many groups there are, when they are on & who the leaders are & where & when they are*

**WORSHIP AND MUSIC Statistics**

My experience of worship and worship services at Southpoint over the past few months ...

I enjoy worship services at Southpoint

| Average | Most Occurring | Minimum | Maximum |
|---------|----------------|---------|---------|
| 4.23    | 4              | 3       | 5       |

I feel that I experience the presence of God in church services at Southpoint

| Average | Most Occurring | Minimum | Maximum |
|---------|----------------|---------|---------|
| 4.10    | 4              | 3       | 5       |

I feel that I am able to participate in church services

| Average | Most Occurring | Minimum | Maximum |
|---------|----------------|---------|---------|
| 4.26    | 4              | 3       | 5       |

Southpoint's church services are accessible to me

| Average | Most Occurring | Minimum | Maximum |
|---------|----------------|---------|---------|
| 4.45    | 5              | 2       | 5       |

If I wanted to get more involved in our worship services, I would know who to speak to

| Average | Most Occurring | Minimum | Maximum |
|---------|----------------|---------|---------|
| 4.45    | 4              | 3       | 5       |

I find it difficult to connect to God in our worship services

| Average | Most Occurring | Minimum | Maximum |
|---------|----------------|---------|---------|
| 2.07    | 2              | 1       | 5       |

I would like to know more about what worship is and how I can participate



| Average | Most Occurring | Minimum | Maximum |
|---------|----------------|---------|---------|
| 2.25    | 2              | 1       | 5       |

### *Praise Points*

*Jarred, Ben and team create an amazing atmosphere which places us into God's presence and prepares us to be open to His word*

### **PREACHING Statistics**

When I think about my experience of preaching at Southpoint over the past few months....

I find the preaching at Southpoint often inspiring

| Average | Most Occurring | Minimum | Maximum |
|---------|----------------|---------|---------|
| 4.03    | 4              | 2       | 5       |

I find the preaching at Southpoint stretches my faith

| Average | Most Occurring | Minimum | Maximum |
|---------|----------------|---------|---------|
| 3.97    | 4              | 2       | 5       |

I feel preaching at Southpoint helps me understand the bible more clearly

| Average | Most Occurring | Minimum | Maximum |
|---------|----------------|---------|---------|
| 4.13    | 5              | 2       | 5       |

I feel that the preaching at Southpoint is relevant to my life

| Average | Most Occurring | Minimum | Maximum |
|---------|----------------|---------|---------|
| 4.07    | 4              | 2       | 5       |

Southpoint's preaching is accessible to me

| Average | Most Occurring | Minimum | Maximum |
|---------|----------------|---------|---------|
| 4.30    | 5              | 2       | 5       |

If I wanted to get more involved in our preaching team, I would know who to speak to

| Average | Most Occurring | Minimum | Maximum |
|---------|----------------|---------|---------|
| 4.17    | 4              | 3       | 5       |

### *Praise Points*

*We are so blessed Lydia took on main role, her sermons always focus on the bible, presentation is clear, precise, humorous, easy to feel involved. Have had interesting lay preachers as well.*

*Would love to hear more from Rod Hook, seems that he hasn't preached for a while now. Messages from both Rod & Lydia are always very good*

### **PASTORAL CARE Statistics**

Pastoral care is where we go a little deeper with people, how we lean in and care for people particularly those going through difficult circumstances or needing extra support (spiritual or otherwise).

When I think about my recent experience of pastoral care at Southpoint over the past few months ...

I know who to reach out to if I needed pastoral care and support

| Average | Most Occurring | Minimum | Maximum |
|---------|----------------|---------|---------|
| 4.47    | 5              | 3       | 5       |

I feel that people are loved and cared for at Southpoint

| Average | Most Occurring | Minimum | Maximum |
|---------|----------------|---------|---------|
| 4.33    | 4              | 3       | 5       |

The pastoral care team has helped me to feel connected to Southpoint

| Average | Most Occurring | Minimum | Maximum |
|---------|----------------|---------|---------|
| 3.97    | 5              | 2       | 5       |

I feel there is active prayer going on throughout the week for those in need

| Average | Most Occurring | Minimum | Maximum |
|---------|----------------|---------|---------|
| 4.20    | 5              | 3       | 5       |

I feel involved in pastoral care of others in the church

| Average | Most Occurring | Minimum | Maximum |
|---------|----------------|---------|---------|
| 3.80    | 5              | 2       | 5       |

If I wanted to get more involved in our pastoral care team, I would know who to speak to

| Average | Most Occurring | Minimum | Maximum |
|---------|----------------|---------|---------|
| 4.43    | 5              | 2       | 5       |

### *Praise Points*

*Nick and Robyn are an extremely dedicated team and give their all in communicating + encouraging us to contact those with needs - with prayer, visitations, phone calls etc. Others have since joined this enthusiastic group and having our own Whatsapp group is extremely rewarding.*

### **OUTREACH AND ENGAGEMENT Statistics**

Outreach and Engagement is about how we as a church engage with the community around us. When I think about my experience of Outreach and Engagement at Southpoint over the past few months ...

I feel aware of how SouthPoint is involved in the local community

| Average | Most Occurring | Minimum | Maximum |
|---------|----------------|---------|---------|
| 3.82    | 4              | 2       | 5       |

I feel encouraged by our leaders to be involved in community outreach

| Average | Most Occurring | Minimum | Maximum |
|---------|----------------|---------|---------|
| 3.79    | 4              | 2       | 5       |

I feel I am able to get involved in serving others in our community through Southpoint

| Average | Most Occurring | Minimum | Maximum |
|---------|----------------|---------|---------|
| 3.79    | 4              | 2       | 5       |

I feel a sense of ownership for the community outreach and engagement activities at Southpoint

| Average | Most Occurring | Minimum | Maximum |
|---------|----------------|---------|---------|
| 3.36    | 3              | 2       | 5       |

I feel unaware of community outreach and engagement

| Average | Most Occurring | Minimum | Maximum |
|---------|----------------|---------|---------|
| 2.39    | 2              | 1       | 5       |

If I wanted to get more involved in our Outreach and Engagement team, I would know who to speak to.

| Average | Most Occurring | Minimum | Maximum |
|---------|----------------|---------|---------|
| 3.86    | 4              | 2       | 5       |

*Point to ponder*

*As this group has only just met it is still very much in infancy.*

*The things to bless Forbes primary and the Women's shelter have meant the most to me.*

### **STEWARDSHIP Statistics**

Stewardship is how we manage the resources that God has entrusted to us (e.g. finances, property, buildings) in a God honouring way.

When I think about my experience of Stewardship at Southpoint over the past few months ...

I feel our finances are well managed

| Average | Most Occurring | Minimum | Maximum |
|---------|----------------|---------|---------|
| 3.79    | 4              | 2       | 5       |

I regularly give to support ministry at Southpoint

| Average | Most Occurring | Minimum | Maximum |
|---------|----------------|---------|---------|
| 4.07    | 5              | 2       | 5       |



I feel aware of what our offering money is used for

| Average | Most Occurring | Minimum | Maximum |
|---------|----------------|---------|---------|
| 3.36    | 4              | 2       | 5       |

Our church buildings are in good repair

| Average | Most Occurring | Minimum | Maximum |
|---------|----------------|---------|---------|
| 3.79    | 4              | 2       | 5       |

Our properties are used in a way that I feel is consistent with God's purposes for our church

| Average | Most Occurring | Minimum | Maximum |
|---------|----------------|---------|---------|
| 3.69    | 4              | 2       | 5       |

Our resources are managed with transparency

| Average | Most Occurring | Minimum | Maximum |
|---------|----------------|---------|---------|
| 3.61    | 4              | 2       | 5       |

If I wanted to get more involved in our Stewardship team, I would know who to speak to

| Average | Most Occurring | Minimum | Maximum |
|---------|----------------|---------|---------|
| 4.10    | 4              | 2       | 5       |



## APPOINTING NEW ELDERSHIP

# Fruit of the Spirit

*Galatians 5:22-23*

*But the fruit of the Spirit is love, joy, peace, forbearance, kindness, goodness, faithfulness, gentleness and self-control. Against such things there is no law.*



### **What is an Elder?**

*Elders are shepherds* (e.g. Acts 20:28; 1 Peter 5:1-4).

The elders' mission is:

- to lead, teach, protect from false teachers and encourage sound doctrine (Acts 15:6, 1 Timothy 4:13; 2 Timothy 3:13–17; Titus 1:9)
- feed the sheep by teaching the Word (1 Timothy 3:2; 2 Timothy 4:2; Titus 1:9)
- love the people in the church community the way shepherds care for the sheep in a flock (e.g. visit the sick and pray: James 5:14; Acts 6:4),

so that the church members will grow up into spiritual maturity (Ephesians 4:11-13).

The word Pastor and Elder are often interchangeable in the New Testament (and so *our elders are pastors, and our pastors are also elders* – they are part of the same team that shepherds the church).

*Elders lead.* They "oversee" the local church. They need to be able to do this with diligence and in humility as they follow Christ (who is the head of the church). Practically this means helping to support and develop other leaders, helping to shape focus and culture of the church, guiding, and making decisions, governance (finance, staff, facilities, ministry leaders etc) and providing structure and processes to enable the mission of God to extend in the world.

Leadership comes in many forms. We recognise that humans often look to external signals of power (e.g. dominance, money, appearance) but we are to ignore these things – *we want leaders who demonstrate a heart after God*. From reading the scriptures we understand this can come in any human, regardless of culture, gender, age, appearance. We understand Paul's instructions to Timothy about elders in the context of the wider New Testament – as a result in our church we believe in the gifting of all for leadership and recognise that throughout the New Testament there are examples of men and women who filled the roles of pastors, teachers, shepherds, ministers, and overseers of churches.

*We always find elders (plural) in New Testament churches* (e.g. Acts 15:4; 20:17; Titus 1:5). Each congregation should have a team of shepherds, bringing their diverse gifts, understandings, and circumstances to their ministry.

Instead of focussing on external appearance, the New Testament job descriptions for elders focus largely on *character* (e.g. 1 Timothy 3:1-7; Titus 1:5-9). Elders must be self-controlled, sensible, holy, and hospitable. They can't be drunkards or lovers of money. Elders must be respectable and moral – to both those inside and those outside the church.

*The elders' character matters* (1 Peter 5:3; Hebrews 13:7).

*This character and leadership start in one's own life and at home.* Paul gave Timothy guidelines on this (1 Timothy 3:2; Titus 1:6) of being faithful in one's marriage and honouring God as a parent.

While these might be somewhat contextual guidelines (e.g. there were clearly women leaders elsewhere in the church at the time, and the church has long since accepted ministers and elders who have been divorced), we can recognise some principles here. Life at home needed to be orderly so we can give of ourselves for the church. Living a spirit filled life at home is also often the truest test of our character.

So saying, *Elders are people who are evidencing this character and leadership in their life now.* We don't judge people on their past (Romans 2) but look for the current fruit of the spirit in their life (Galatians 5:22-23). Someone might have had difficulties in the past (as we all have) but now are living life in God. Likewise, someone might have once been on fire for God but now seems to be lacking the fruit of an ongoing relationship with God – we need to look for evidence of the fruit of the spirit now!

*Elders must be able to teach* (1 Timothy 3:2) so that they can build up the church in sound doctrine and refute false teachers (Titus 1:9; cf. Acts 20:30-31). This can take lots of different shapes: personal, leading groups, teaching any generation, preaching. They need to know (and seek to know) the Word (the living word – Jesus, and the written word!).

***In summary; we are seeking nominations for new Elders for our church.***

Someone who follows Jesus and who seeks God's wisdom (in prayer, and in the word)

Someone who is evidencing the fruit of the spirit in all their life (including their family life): Love, joy, peace, patience, kindness, goodness, faithfulness, gentleness, and self-control.

Someone who knows the Christian faith and understands the scriptures, and can teach what they know (in small or large ways).

Someone who leads, pastorally cares for, and shepherds people (officially or unofficially).

Someone who can govern with diligence (this has some practical implications: our elders need to understand both the Christian mission of the church but also the responsibilities we have as an organisation in Australia).



Given our governance structure as an organisation, elders need to also be church members (if you are not and would like to be please let Rod Hook know or ask Ivana or Hanli for a membership form).

You may have other characteristics you personally value as well – based on your reading of scripture and your experiences.

We ask that you prayerfully consider this nomination. We will receive nominations to [admin@southpointcc.org.au](mailto:admin@southpointcc.org.au) or via the [drop box](#) in the foyer.

Nominations will be considered by current Elders (Rod Hook, Belynda Till, Hamilton McNicol) and two other members of the congregation. This committee will prepare the final ballot (and will approach nominees to discuss their nomination).

A final ballot of nominees will be presented to the Church at the Annual General Meeting [19 September 2021](#).

Elders are elected for 3 year terms (unless otherwise negotiated).

*tear here*

-----

## ***Nomination For Elders at Southpoint***

I nominate (insert full name)

\_\_\_\_\_

I confirm that they meet the guidelines for Eldership, and I believe they would serve faithfully in this role.

Signed: \_\_\_\_\_ Name: \_\_\_\_\_

## PRAYER POINTS

---

*1 Thessalonians 5:16-18*

*Rejoice always pray continually, GIVE THANKS in all circumstances;*

*For this is God's will for you in Christ Jesus*

We are encouraged to have grateful hearts for God's mercies which we receive daily from our Father.

Enter His gates with thanksgiving, and his courts with praise!

Give thanks to Him: Bless His name (Psalm 100:4)

God has blessed us with many answers to our prayers.

Let us continue to thank God for His blessings to us at Southpoint as we seek direction for the future of our church.

### ***Prayer points***

- Pastoral search
- New elders
- Ministries in our church
  - Pastoral Care
  - Hospitality
  - Outreach and Engagement
  - Leaders support and Development
  - Generations and Discipleship
  - Preaching and Communication
  - Worship and Music
  - Stewardship
- Continue to uplift those in our congregation who are struggling physically, emotionally, or spiritually.
- Spiritual growth of our children in preschool, primary and teenagers in our congregation
- Those with family overseas dealing with COVID
- Upcoming AGM

# HOW TO GIVE

---

## Banking details

Direct Deposits to SouthPoint Church of Christ Inc.  
BSB 105131  
A/C No  
067 242 040

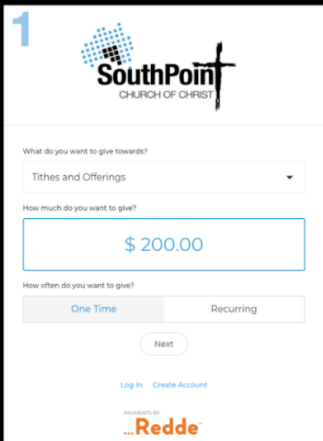
## Website and App

GoTo: <https://southpointcc.org.au/payments>

When sending money online to SouthPoint **always** use a reference that explains clearly what your money is for. Don't for instance use "Mission" as a reference, but rather "Lion Hearts", or "Compass", or "Compassion". This makes it easier for the finance team to know where the money should be allocated.

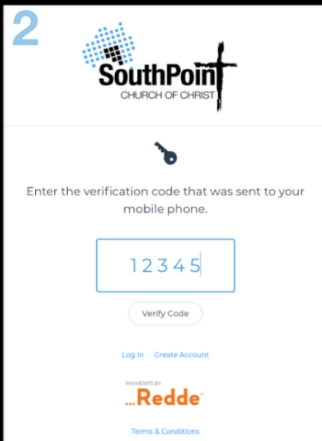
**Giving is as easy as 1...2...3**

**1**



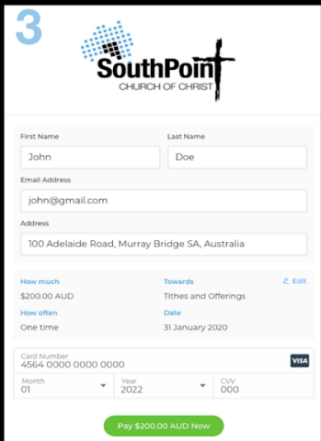
Select the cause and amount to give

**2**



Enter the secure code sent by sms

**3**

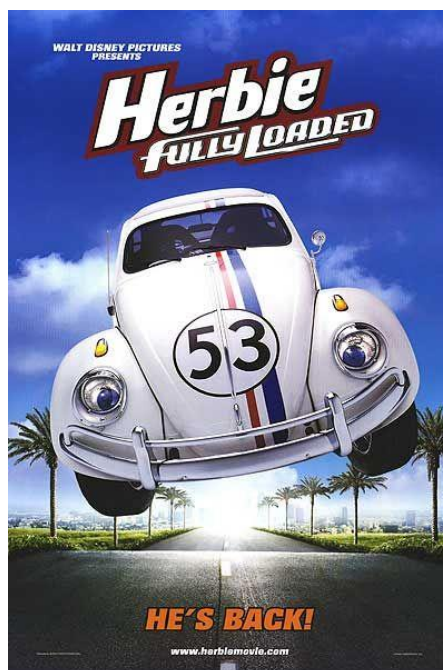


Enter your details and select 'Pay Now'

## IN THE PIPELINE

---

### KIDS MOVIE NIGHT



Maggie, an aspiring racer, discovers Herbie, a Volkswagen Beetle, that is sentient. She and the car then bond together and become a formidable tandem on the race track.

Parents, please accompany your child(ren) and join us for a cup of tea or coffee.

**Men's ministry working bee – from 7:30am**

**free breakfast**

4 September 2021

**Leaders meeting – 7pm – 9pm**

6 September 2021

**AGM – after church service**

19 September 2021



## Ivana's Recycling Fact

Hot Tip: hot wood is no good in any bin

### **REMEMBER TO SAFELY DISPOSE OF ASH AND CHARCOAL THIS WINTER.**

If you are using a wood fire, it is important to safely dispose of ash and charcoal.

Wood, charcoal and ash needs to be completely extinguished and cold before placing it into the green organics bin.

If wood, charcoal or ash is still hot, this can burn your bin or cause fires within the collection trucks, which can damage equipment and put drivers at risk.

### **WHICH BIN?**

Once the wood, charcoal and ash is completely extinguished and cold, please place it in the **green organics bin**.

Alternatively, you can place it in your own compost bin or use it directly in the garden.



## Admin

Please do get in touch to say hello, ask questions, or provide feedback about what you would like to see at SouthPoint. You might have ideas for events, fundraising, home groups, kids church activities etc. We want to hear it all.

You can reach us via e-mail: [admin@southpointcc.org.au](mailto:admin@southpointcc.org.au) or phone 8293 5754 or speak with us in person.

We share our days in the office, which is now open on Tuesdays (9-5 Hanli), Thursdays (9-3 Ivana) & Fridays (9-5 Hanli & Ivana).



We hope you enjoyed this Newsletter, we are here for you!

Yours,

Hanli & Ivana

*May God, the source of hope, fill you with all joy and peace by means of your faith in him, so that your hope will continue to grow by the power of the Holy Spirit.*

*Romans 15:13*